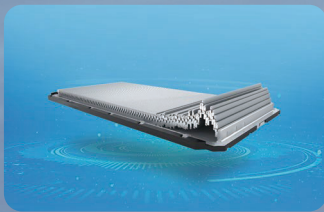


**S**AFETY**EVERY DRIVE IS TRUSTWORTHY.**

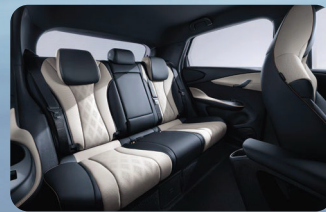
BYD DOLPHIN is backed by BYD advance blade battery technology and advanced safety features.

ELECTRIFIED**POWER UP WITH INTELLIGENT ELECTRIC DRIVING.**

BYD DOLPHIN is an intelligent car with smart connectivity, voice control and advanced driving assistance for an enhanced electrified driving experience.

AESTHETICS**DIVE INTO ELECTRIC FUN.**

BYD DOLPHIN offers a delightful and easy-going driving experience, feel free to take control and enjoy the ride. Test drive it now.

SPACE**COZY IN EVERY MOMENT.**

BYD DOLPHIN offers an enjoyable ride for all passengers, with a roomy interior comparable to that of C-Segment vehicles. Seeing is believing.



	Dynamic Standard Range	Premium Extended Range
Dimensions		
Overall length (mm)	4,290	
Overall width (mm)	1,770	
Overall height (mm)	1,570	
Wheel track - front/rear (mm)	1,530/1,530	
Wheelbase (mm)	2,700	
Ground clearance laden (mm)	130	
Powertrain		
Motor type	Permanent magnet synchronous motor	
Drivetrain	Front-Wheel Drive	
Maximum power (kW)	70	150
Maximum torque (N·m)	180	310
Acceleration 0-100km/h (s)	12.3	7.0
Driving range: WLTP (km)	340	427
Seating capacity	5	5
Battery type	BYD Blade Battery	BYD Blade Battery
Battery capacity (kWh)	44.9	60.48
Chassis		
Front suspension	Mac pherson strut	Mac pherson strut
Rear suspension	Torsion beam	Multi -link
Front brake	Ventilated disc	Ventilated disc
Rear brake	Disc	Disc
Wheel type	Alloy	Alloy
Tyre size	195/60 R16	205/50 R17
New Energy		
Portable home charger (Type G)	○	○
AC charging port - Type 2	●	●
DC charging port - CCS 2 Standard range (60kW)	●	-
DC charging port - CCS 2 Extended range (80kW)	-	●
V2L function	●	●
V2L discharge adapter (Type G)	○	○
Regenerative braking	●	●
Safety and Security		
Front airbags - driver& front passenger	●	●
Side airbags - driver& front passenger	●	●
Side curtain airbags - front & rear	●	●
Dual Stage Pretensioner on front seat belts	-	●
Pretensioner on front seat belts	●	-
Pretensioner on rear seat belts	●	●
Seat belt reminder - front & rear	●	●
Tyre Pressure Monitoring System (TPMS)	●	●
ISOFIX child restraint anchorage points (outer rear seats)	●	●
Intelligent power brake system	●	●
Anti-Lock Braking System (ABS)	●	●
Electric Parking Brake System (EPB)	●	●
Electronic Stability Control (ESC)	●	●
Traction Control System (TCS)	●	●
Electronic Brake Force Distribution (EBD)	●	●
Door Open Warning (DOW)	●	●
360° view monitor	●	●
Front 2 ultrasonic radars	●	●
Rear 3 ultrasonic radars	●	●
Adaptive Cruise Control (ACC)	●	●
Automatic Emergency Braking System (AEB)	●	●
Lane Departure Warning (LDW)	●	●
Lane Keeping Support (LKS)	●	●
Predictive Collision Warning (PCW)	●	●
Rear Collision Warning (RCW)	●	●
Blind Spot Detection (BSD)	●	●
Rear Cross Traffic Alert (RCTA)	●	●
Rear Cross Traffic Brake (RCTB)	●	●
Lane Departure Prevention (LDP)	●	●
Emergency Lane Keeping Assist (ELKA)	●	●
Lane Change Collision Warning (LCW)	●	●

- NOTE**
- The real range is influenced by many factors such as individual driving style, load, traffic etc. The declared range is estimated for reference only.
 - Bluetooth® is a registered trademark of Bluetooth SIG, Inc. Compatibility and functionality varies depending on device.
 - Apple CarPlay® is a registered trade mark of Apple Inc. Requires compatible device, USB connection, Available in limited countries.
 - Colours depicted are a guide only and may vary from actual colours due to the printing.
 - Driving assist system are not a substitute for the driver's responsibility of the vehicle.
 - BYD reserves the right to vary vehicle specifications and standard features from those detailed in this brochure.

	Dynamic Standard Range	Premium Extended Range
Exterior		
Electrically heated and adjustable exterior mirrors	●	●
Electrically retractable exterior mirrors	●	●
Panoramic glass roof	-	●
Front boneless wiper	●	●
Rear wiper	●	●
Interior		
Three-spoke steering wheel	●	●
Electric power assisted steering system	●	●
5" digital instrument panel	●	●
Manual dimming interior rear view mirror	●	●
Mobile phone wireless charging	-	●
Synthetic leather seat	●	●
60/40 split fold rear seats	●	●
6-way manual adjustment - driver seat	●	●
4-way manual adjustment - front passenger seat	●	●
Ventilated front seats	●	●
Height Adjustable Headrests - rear seats	●	●
Entertainment		
FM radio	●	●
*Bluetooth® phone connectivity and audio streaming	●	●
12.8" intelligent rotating touch screen	●	●
6 speakers	●	●
Satellite Navigation	●	●
*Apple CarPlay® (USB)	●	●
Voice assistant	●	●
USB × 2, Centre console	typeA+ typeC	typeA+ typeC
USB × 2, Rear	typeA+ typeC	typeA+ typeC
Light		
LED headlight	●	●
Follow me home headlight	●	●
LED daytime running light	●	●
LED taillight bar	●	●
LED front reading light	●	●
LED rear reading light	●	-
LED rear side reading light	-	●
Luggage compartment light	●	●
High Beam Assist (HMA)	●	●
Comfort & Convenience		
12V socket	●	●
Keyless entry & Keyless start	●	●
Portable card key	●	●
Driver's window one touch up-down with anti-pinch	●	-
4-door window one touch up-down with anti-pinch	-	●
Automatic air-conditioning	●	●
Heat pump	●	●
PM2.5 air filter (without display)	●	●
Tyre repair kit	●	●

EXTERIOR & INTERIOR COLORS

Premium Extended Range

Atlantis Grey + Black

Grey + Black

Blue + Grey

Blue + Black

Dynamic Standard Range

Ski White + Grey

Grey + Black

Urban Grey

Grey + Black

Sand White

Brown + Black

